



TESONTRANS WATERPROOFING MEMBRANE (TMS-222)

Transparent, One component, Waterbased, Aliphatic PU Hybrid Waterproofing Membrane

Description: TesonTrans TMS-222 is a transparent, one component waterproofing coating, with design based on aliphatic polyurethane hybrid, water base technology with enhanced adhesion and consistent performance. Such technology can provide truly transparent, durable, excellent physical properties, and expected transparent recovery to repair leaking at bathroom, kitchen or any occasions require transparent waterproofing coating to resolve leakage problem. TesonTrans TMS-222 will require minimum two coats with coverage about 1.1 to 1.2 kg/sq-m².

Applications:

- Ceramic Tile & Grout Joint
- Concrete substrate
- Balcony
- Terrace
- Wooden decking
- Transparent waterproofing required

Advantages:

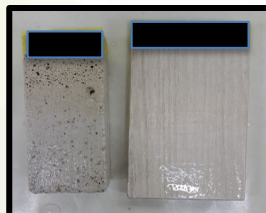
- One component, mixing not require
- Water base, easy to apply
- Excellent adhesion performance
- Tensile Strength : > 2 N/mm²
- Elongation: > 700%
- Excellent transparent recovery
- Water ponding test-Passed



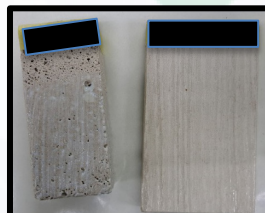
Application Reference:



Excellent transparency application by roller or brush



Ceramic, Concrete application with durability



Excellent transparency recovery after water immersion



Excellent physical properties, not just transparent

Product Range:

PRODUCT CODE	PACKING SIZE	PACKING FORM	COLOUR
TMS-222-TP-20K	20kg	Pail	Milky White
TMS-222-TP-5K	5kg	Pail	Milky White
TMS-222-TP-1K	1kg	Can	Milky White



TESONTRANS WATERPROOFING MEMBRANE (TMS-222)

Transparent, One component, Waterbased, Aliphatic PU Hybrid Waterproofing Membrane

Description: TesonTrans TMS-222 is a transparent, one component waterproofing coating, with design based on aliphatic polyurethane hybrid, water base technology with enhanced adhesion and consistent performance. Such technology can provide truly transparent, durable, excellent physical properties, and expected transparent recovery to repair leaking at bathroom, kitchen or any occasions require transparent waterproofing coating to resolve leakage problem. TesonTrans TMS-222 will require minimum two coats with coverage about 1.1 to 1.2 kg/sq-m².

APPLICATIONS:

- Ceramic Tile & Grout Joint
- Concrete substrate
- Balcony
- Terrace
- Wooden decking
- Transparent waterproofing required

ADVANTAGES:

- One component, mixing not require
- Water base, easy to apply
- Excellent adhesion performance
- Tensile Strength : > 2 N/mm²
- Elongation: > 700%
- Excellent transparent recovery
- Water ponding test-Passed

APPLICATION PROCEDURES

Surface preparation

The substrate surface need to be clean and sound, free from any containment, without trapped moisture occurred.

Application

It can either pour, or apply by brush or roller with thickness less than 1mm thickness per coat at environment temperature between 5 to 35°C. Second coat can apply after 4 to 8 hours, fully dry after two coats will be at least 8 hours. The coverage will be 1.1 to 1.2 kg/sq-m for two coats.

Water ponding test

Recommend to conduct water ponding test to ensure a successful waterproofing treatment.

Priming

Dilution of TesonTrans 222 with 5 % water can act as primer to improve substrate surface preparation and achieve better adhesion performance. The coverage will be subject to substrate condition.

Others

For substrate with high absorbent condition such as wood decking, brick, porous concrete, gypsum panel, etc.; may require more than two coats to meet expected waterproofing performance.

PRODUCT RANGE:

PRODUCT CODE	PACKING SIZE	PACKING FORM	COLOUR
TMS-222-TP-20K	20kg	Pail	Milky White
TMS-222-TP-5K	5kg	Pail	Milky White
TMS-222-TP-1K	1kg	Can	Milky White

LIMITED WARRANTY:

Sellers and manufacturers only obligation shall be replacement of such quantity of product proved to be defective. All advice given herewith is to be best of knowledge, true and accurate. All recommendations or suggestions are made without guarantee. Since the conditions of use are beyond our control, the seller or manufacturer shall not be liable for any injuries, loss or damage, direct or consequential arising from the use of or the failure of the product. Before using, user shall determine the suitability of the product for his intended use and user assumes all risk and liability.

PROPERTIES:

- SG: 1.01
- Solid Content: 46 +/- 3%
- PH: 8 to 9
- Tensile Strength: > 2 N/mm²
- Elongation: > 700 %
- Viscosity: 32320 cps (Spindle 2 , at 50 % Torque)

COVERAGE

- 1 coat :1.1-1.2 Kg/SQ-M², minimum 2 coats
- Primer : 5% water dilution

STORAGE / PACKAGING

- At dry and cool environment for up to 12 months
- Storage temperature: 5 to 30°C
- Protect against moisture and direct sunlight
- Non flammable

NOTE:

Care shall be taken during screeding if required to avoid puncturing the waterproofing membrane. Otherwise lay a protective screed. If any puncturing occurs, to inform the applicator concerned to carry out the necessary repairs.

PRECAUTION:

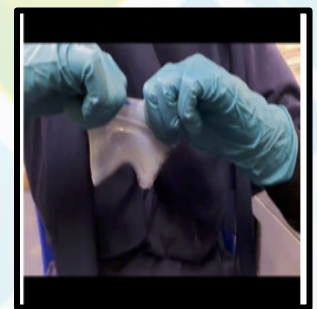
Health & Safety

TESONTRANS is safe to use as it is non-flammable and non-toxic. However it is still advisable to follow good working practice and use only in well ventilated areas.

APPLICATION REFERENCE



Excellent transparency application by roller or brush



Excellent physical properties, not just transparent